

NPN

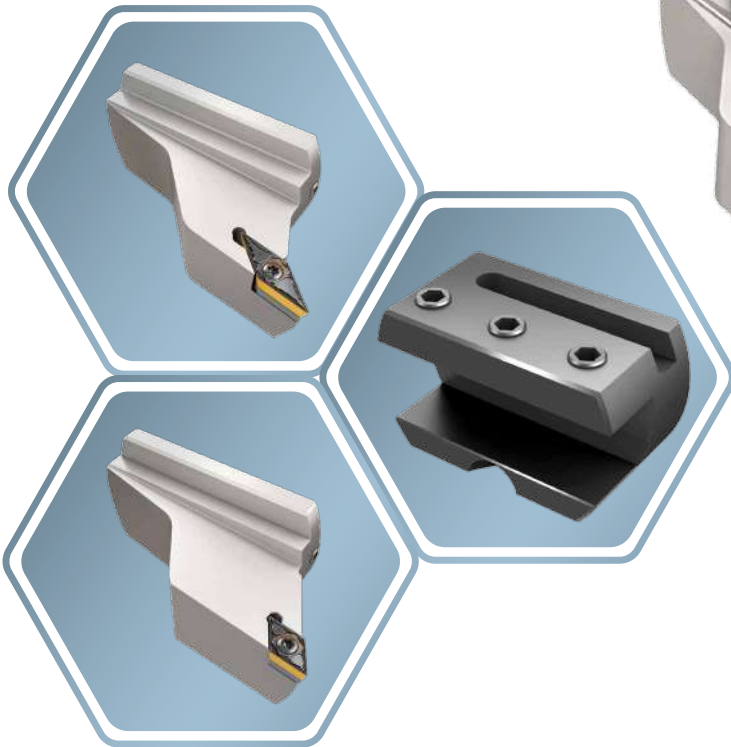
New Product News



HUSHBORE

ANTI VIBRATION BAR

Ø80 Anti-vibration Boring Bars
with Exchangeable Heads



KEY POINT

HUSHBORE line introduces Ø80 head exchangeable anti-vibration boring bars

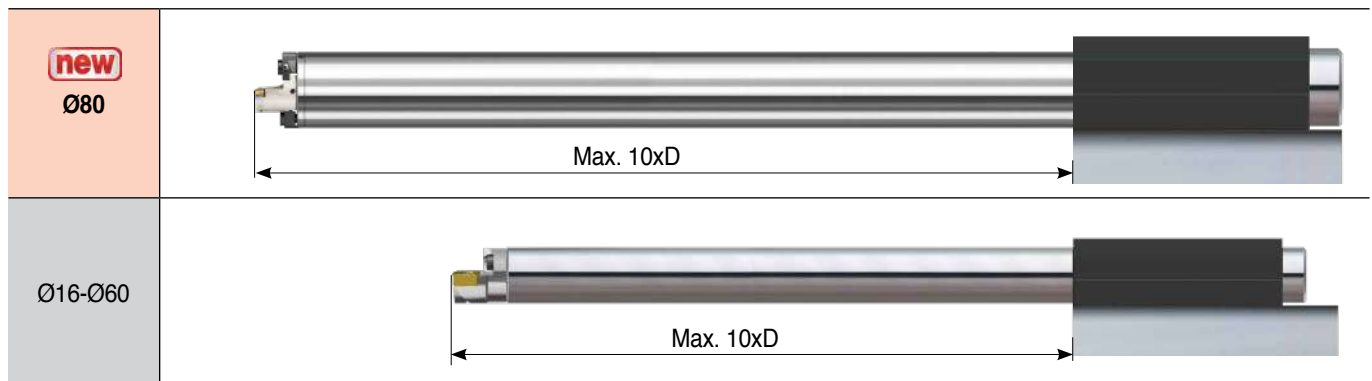
With a new Ø80 shank and a dedicated head introduced to the anti-vibration HUSH-BORE boring bar line specialized in deep internal machining, TaeguTec has expanded its reach in the deep internal machining market.

Available in two types: a modular head with standard inserts for machining various materials, and an adapter that can machine while fastened to a standard square holder, allowing for relatively large diameter internal machining.

Features

- Shanks include built-in vibration damping technology
 - Good surface roughness and improved tool life
- Stainless steel shank prevents corrosion
- Shank diameter: Ø80, length: 7xD, 10xD(available as standard items in 2 types)
- Available in various dedicated head types
- Dedicated Adapter use a 20x20 standard square holder
- Internal coolant type

HUSH-BORE Shank



Head assembly instructions



❶ Loosen the screw.



❷ Slide the head into the slot.



❸ Tighten the screw.

Square holder assembly instructions



❶ Remove the lower clamp.



❷ After sliding the adapter into the boring bar, tighten the clamp screw.

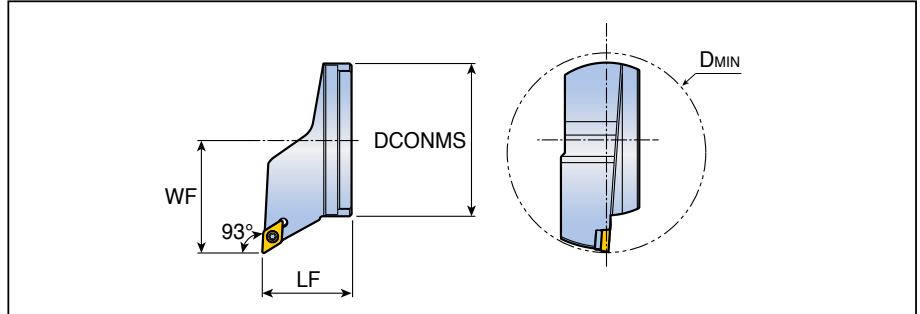


❸ Slide the square holder into the adapter and tighten the adapter screw.

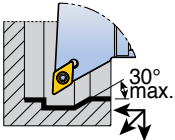
QH-SDUCR/L-VH



Screw type boring heads



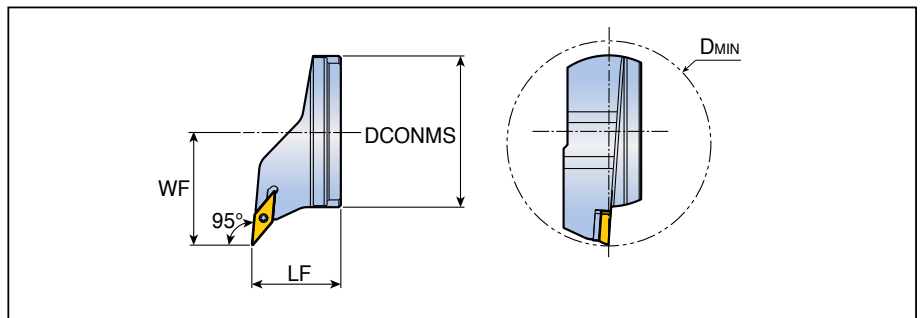
| Approach angle | Designation | Dimension (mm) | | | | Insert |
|----------------|----------------------------|----------------|----|----|------|----------------|
| | | DCONMS | LF | WF | DMIN | |
| 93° | QH80- SDUCR/L-11-VH | 77 | 45 | 57 | 100 | DC...T 11T3... |
| | | | | | | |
| | | | | | | |
| | | | | | | |



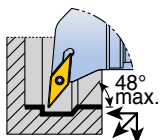
QH-SVLCR/L-VH



Screw type boring heads



| Approach angle | Designation | Dimension (mm) | | | | Insert |
|----------------|----------------------------|----------------|----|----|------|----------------|
| | | DCONMS | LF | WF | DMIN | |
| 95° | QH80- SVLCR/L-16-VH | 77 | 45 | 57 | 100 | VC...T 1604... |
| | | | | | | |
| | | | | | | |
| | | | | | | |



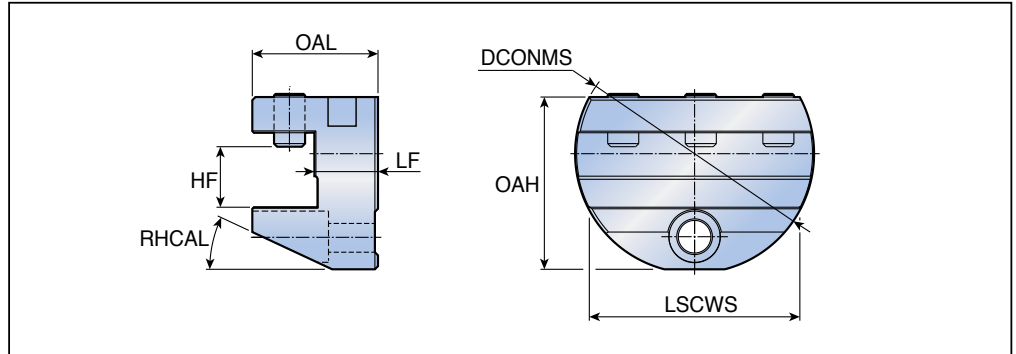
Spare parts

| Designation | Screw | Shim | | Shim screw | Stopper screw | Wrench | | |
|-------------------|-------------|----------|----------|------------|---------------|--------|-------|---------|
| SDUCR/L | SR 16-236 P | TDC 3-1P | - | SR TC-3P | SH M3x0.5x6 | T-15/5 | L-W 4 | L-W 2.5 |
| SVLCR/L... | SR 16-236 P | - | TVC 3-1P | SR TC-3P | SH M3x0.5x6 | T-15/5 | L-W 4 | L-W 2.5 |



QH80-VH

Perpendicular adaptor for external square-shank tools



| Designation | Dimension (mm) | | | | | | |
|----------------------|----------------|------|------|------|------|-------|-------|
| | DCONMS | LF | HF | OAL | OAH | LSCWS | RHCAL |
| QH80- 2020-VH | 77.0 | 20.5 | 20.0 | 40.5 | 55.5 | 67.8 | 25.0 |
| | | | | | | | |
| | | | | | | | |
| | | | | | | | |
| | | | | | | | |
| | | | | | | | |
| | | | | | | | |
| | | | | | | | |
| | | | | | | | |
| | | | | | | | |
| | | | | | | | |
| | | | | | | | |
| | | | | | | | |
| | | | | | | | |
| | | | | | | | |
| | | | | | | | |
| | | | | | | | |
| | | | | | | | |
| | | | | | | | |
| | | | | | | | |
| | | | | | | | |
| | | | | | | | |
| | | | | | | | |

- Used with external 20x20 square holders
- Since there is a deviation in the D_{MIN} value for each holder, it is recommended to use the boring head after checking for interference with the workpiece.

Spare parts

| Designation | Screw | Wrench | | | | |
|-------------|------------------|--------|--|--|--|--|
| | | | | | | |
| QH80 | SR M10x16 DIN913 | L-W 5 | | | | |
| | | | | | | |